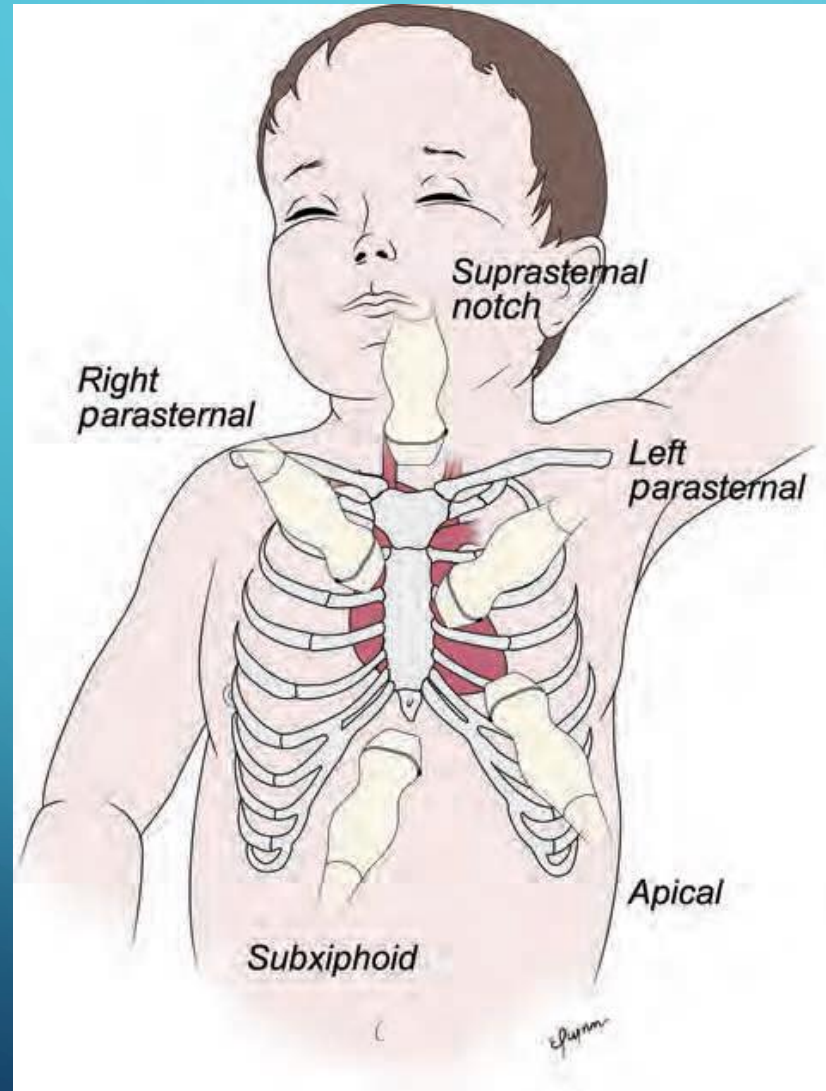


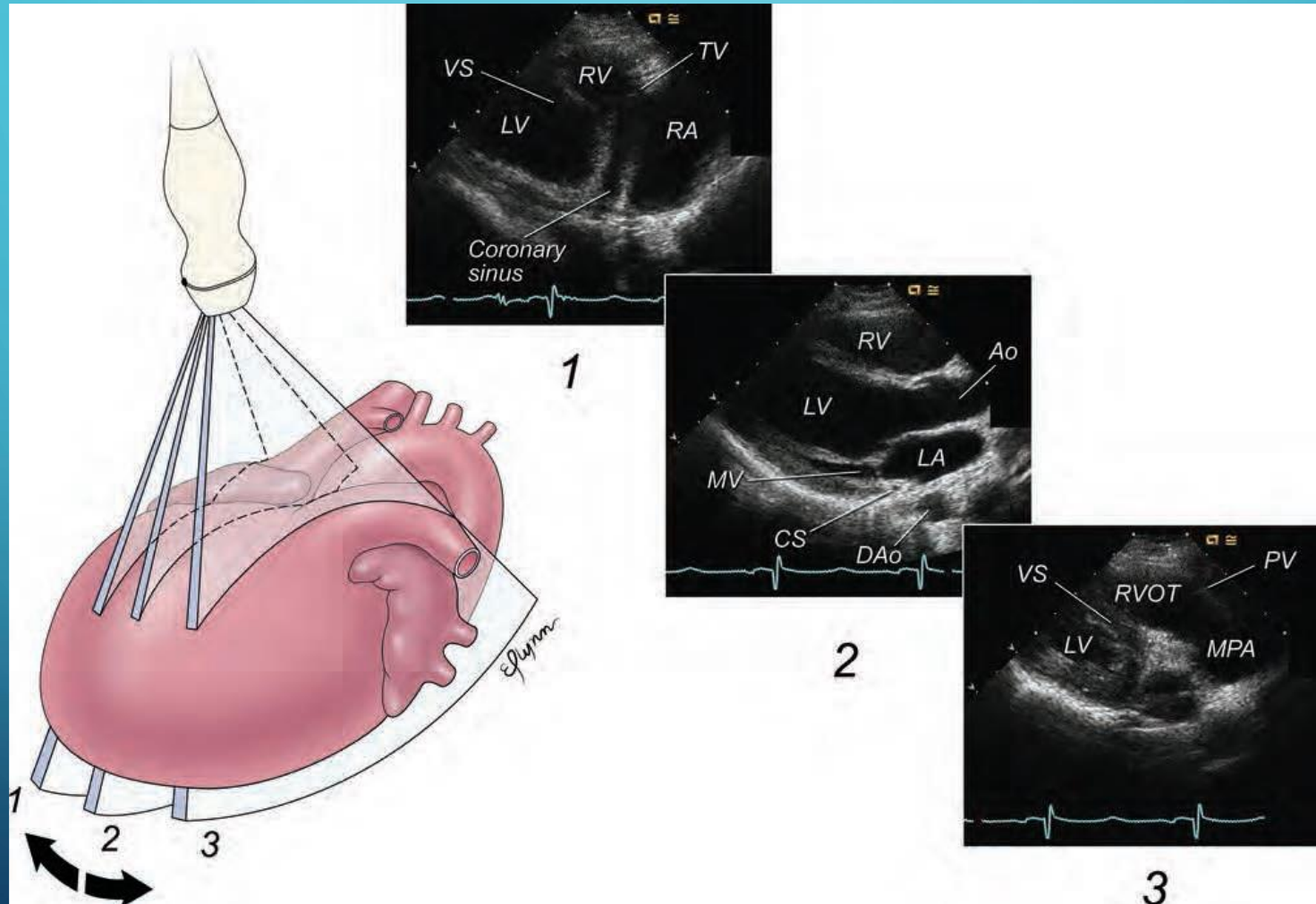
The background is a dark teal gradient. In the corners, there are decorative white line-art elements resembling circuit boards or neural networks, with lines connecting to small circles.

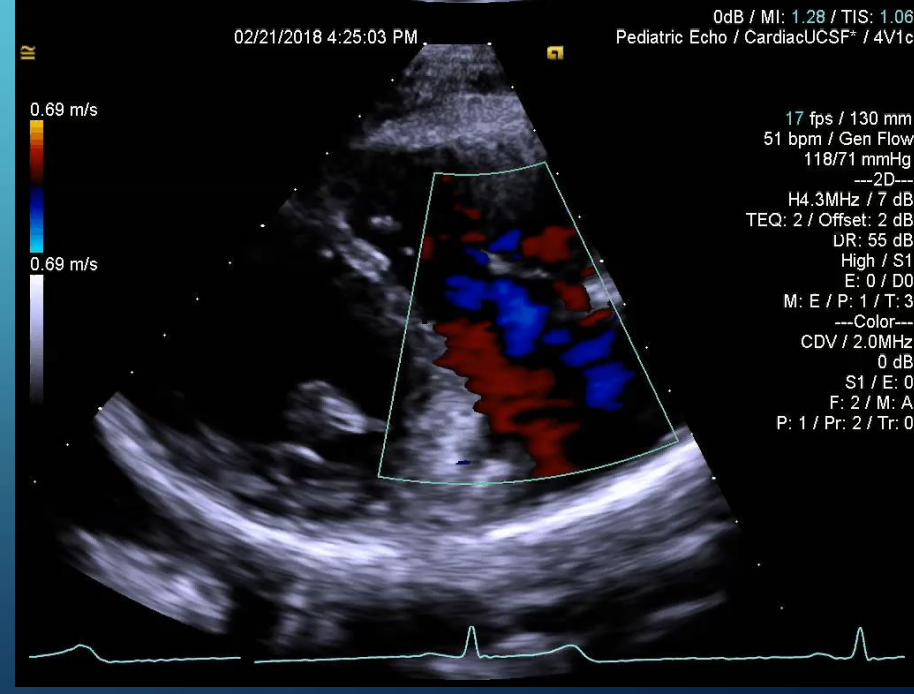
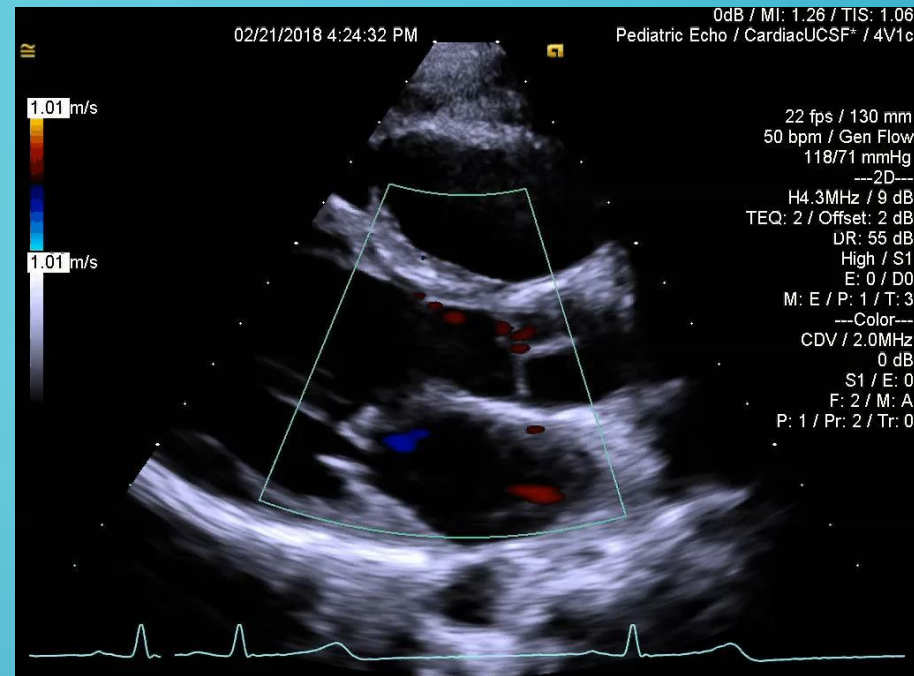
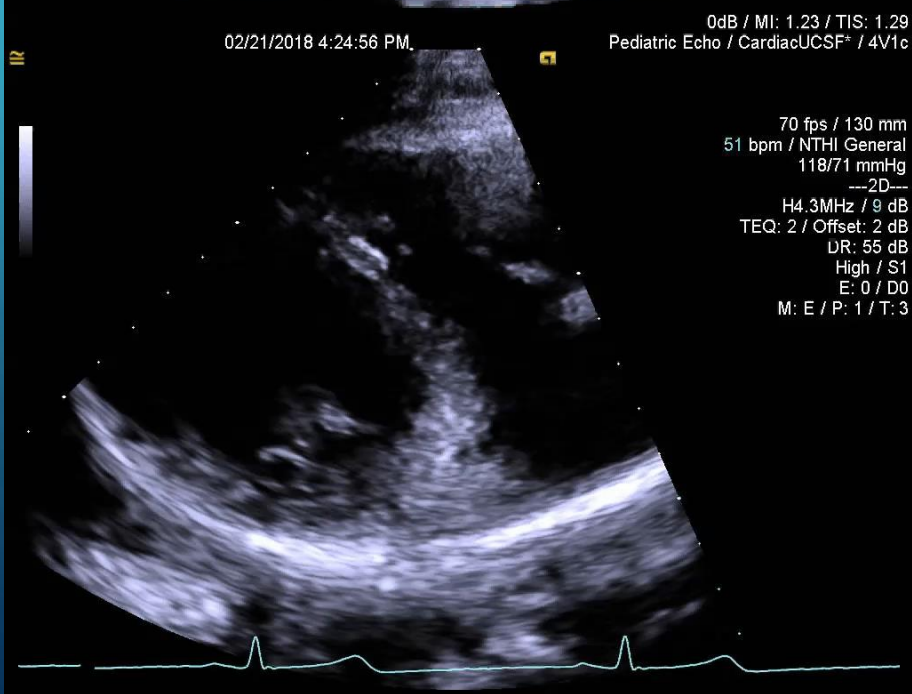
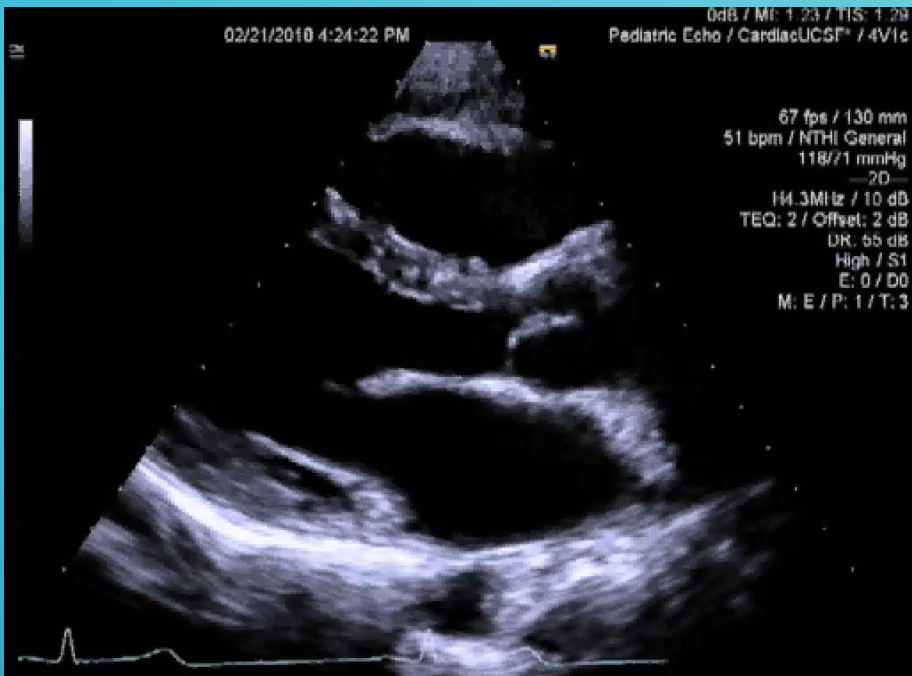
BASIC CARDIAC ANATOMY AND ECHO VIEWS

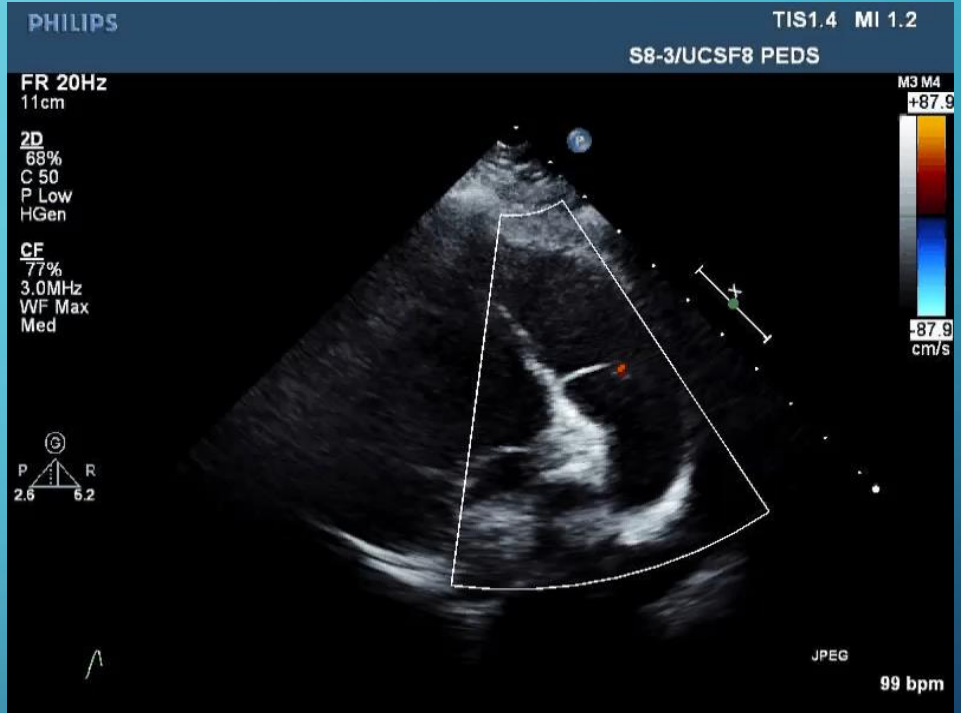
THERE ARE 4 MAIN LOCATIONS USED TO OBTAIN PICTURES



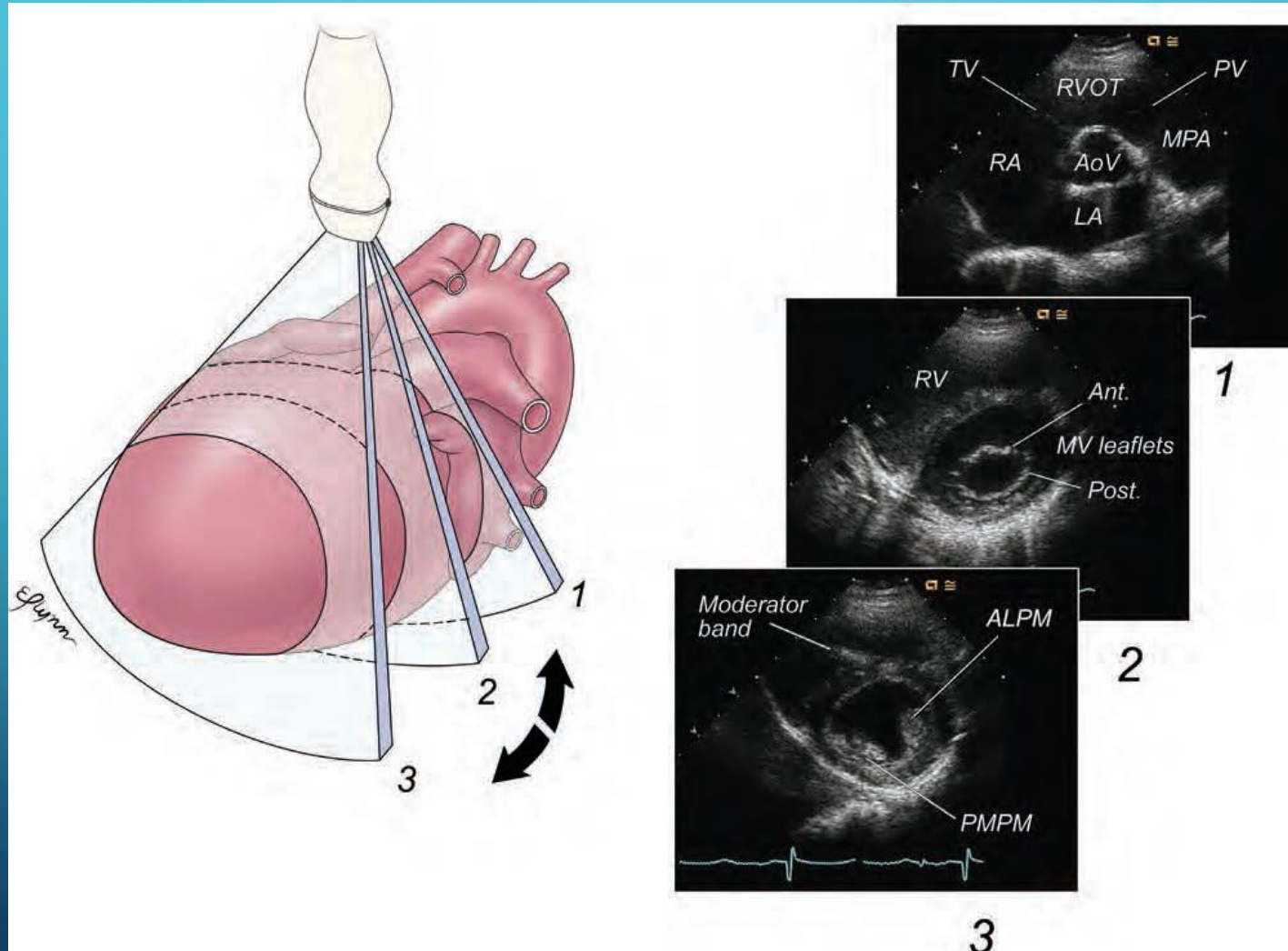
LEFT PARASTERNAL AXIS

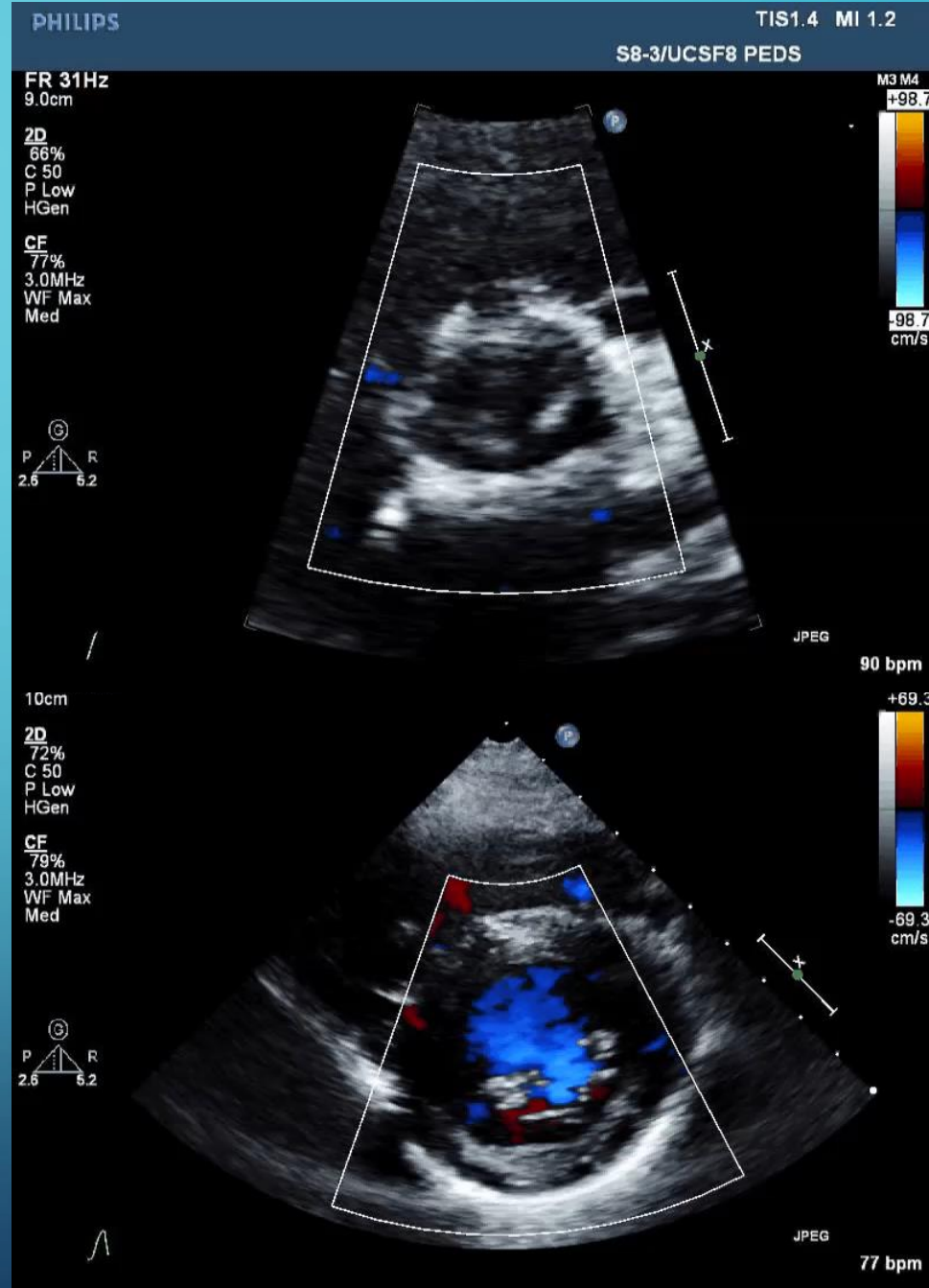
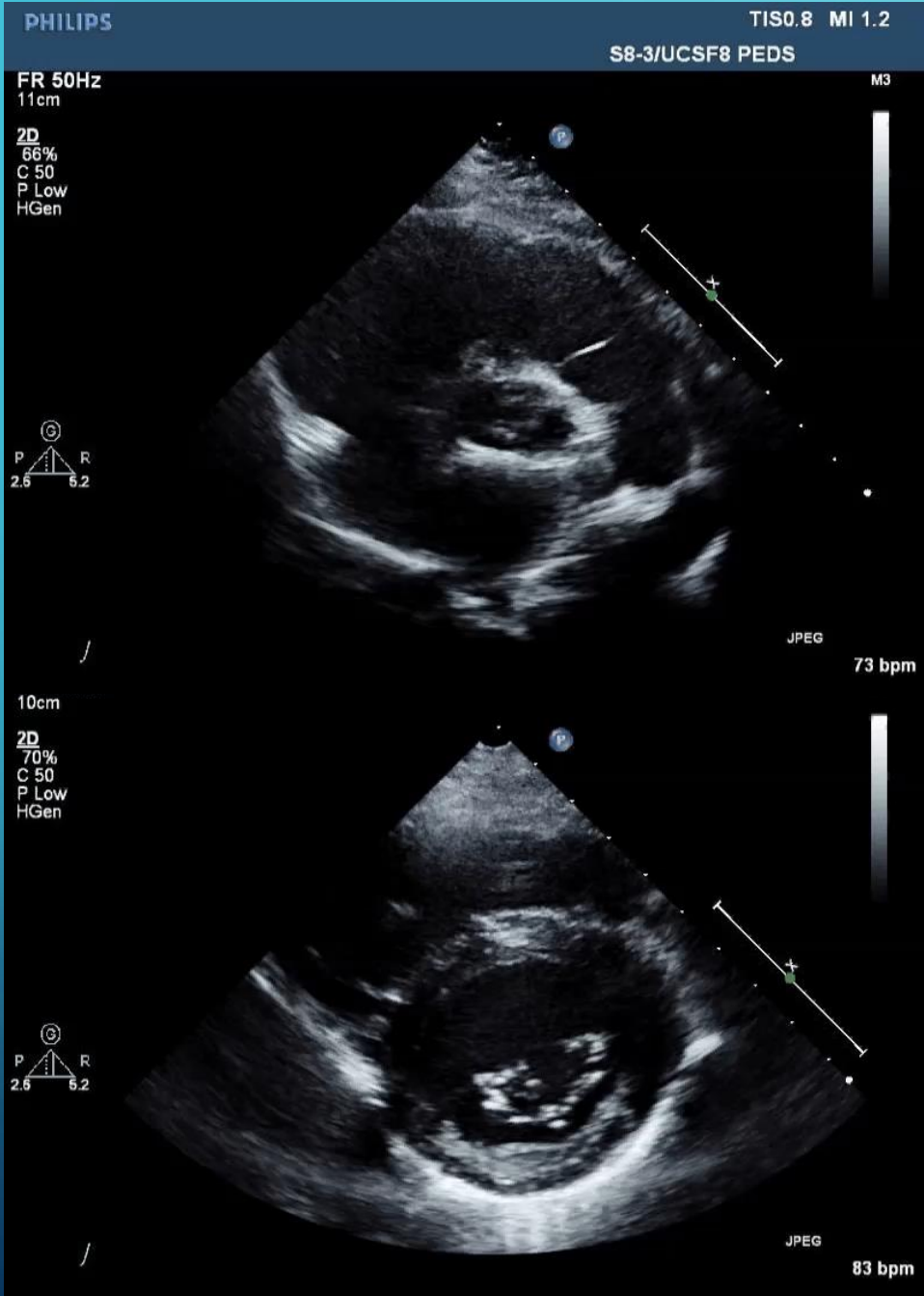


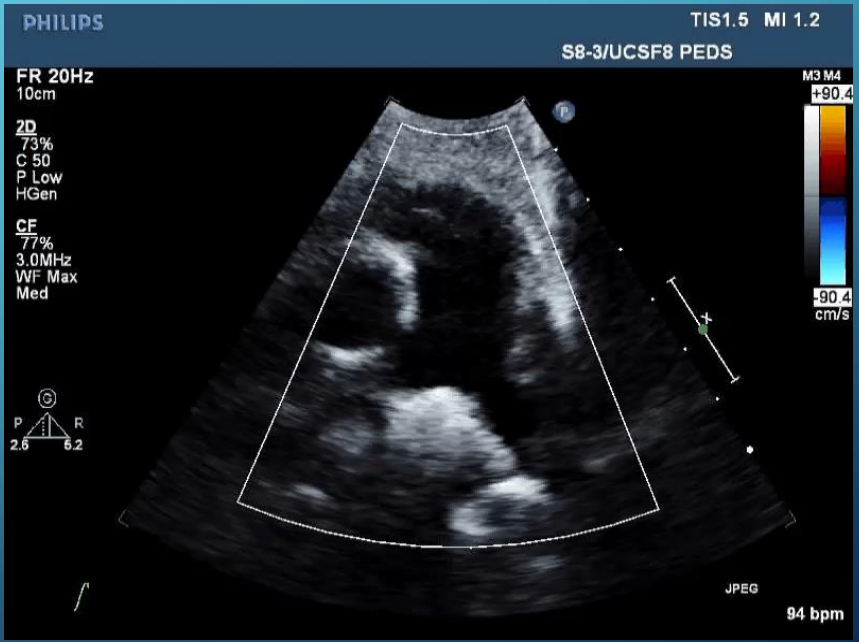
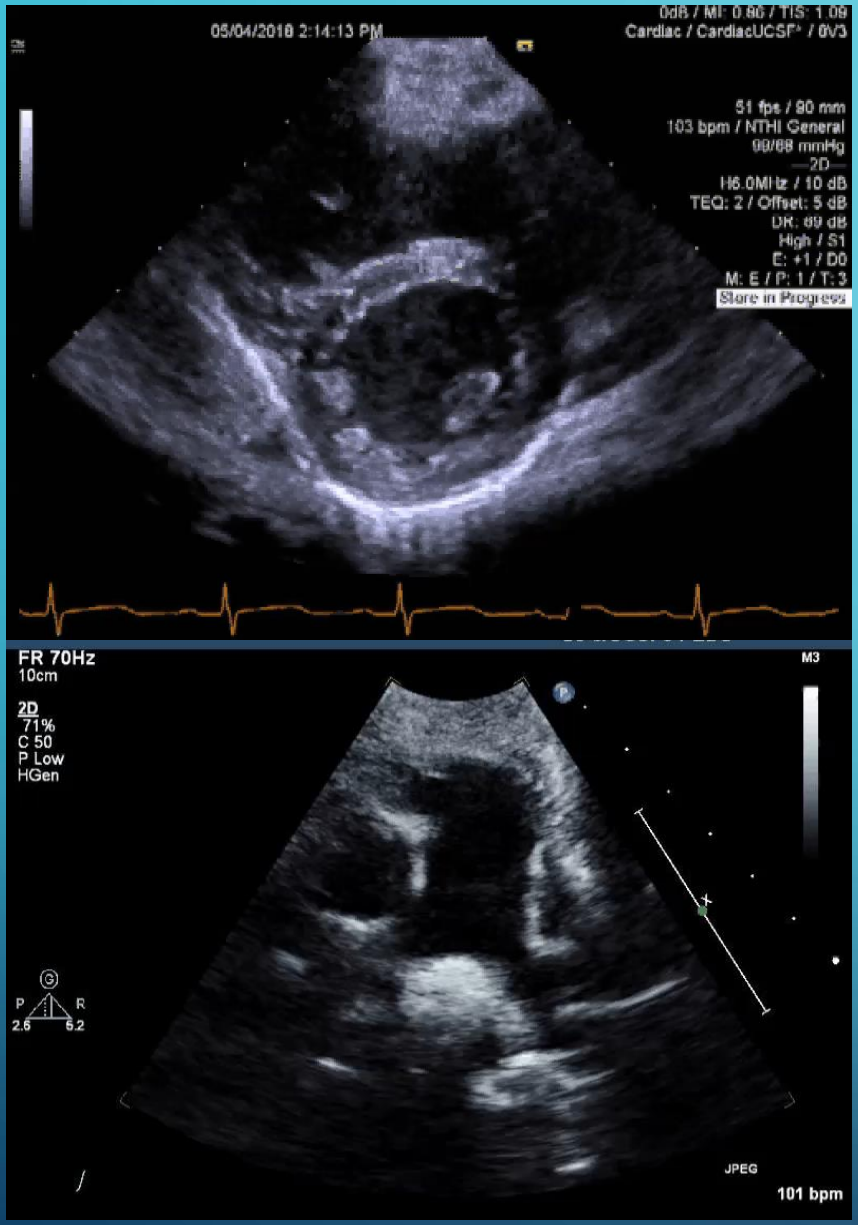




PARASTERNAL SHORT AXIS

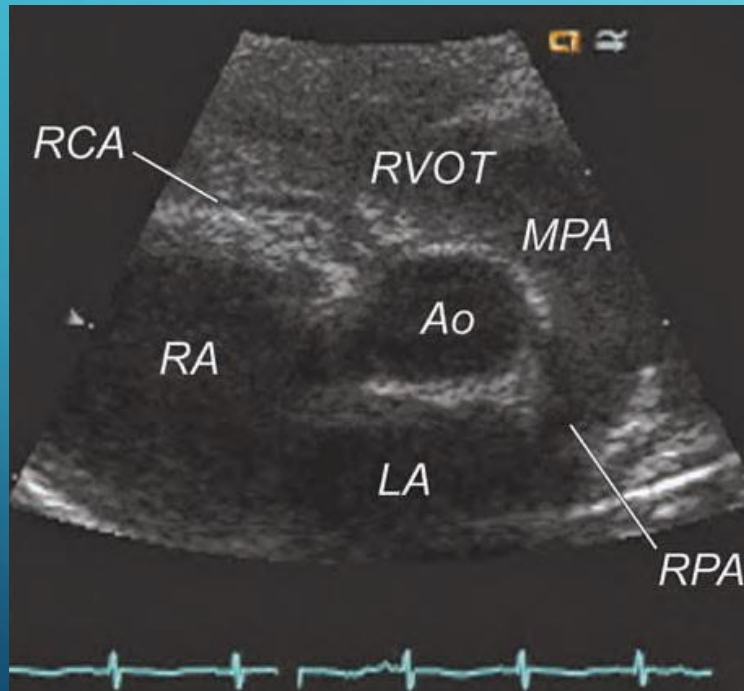




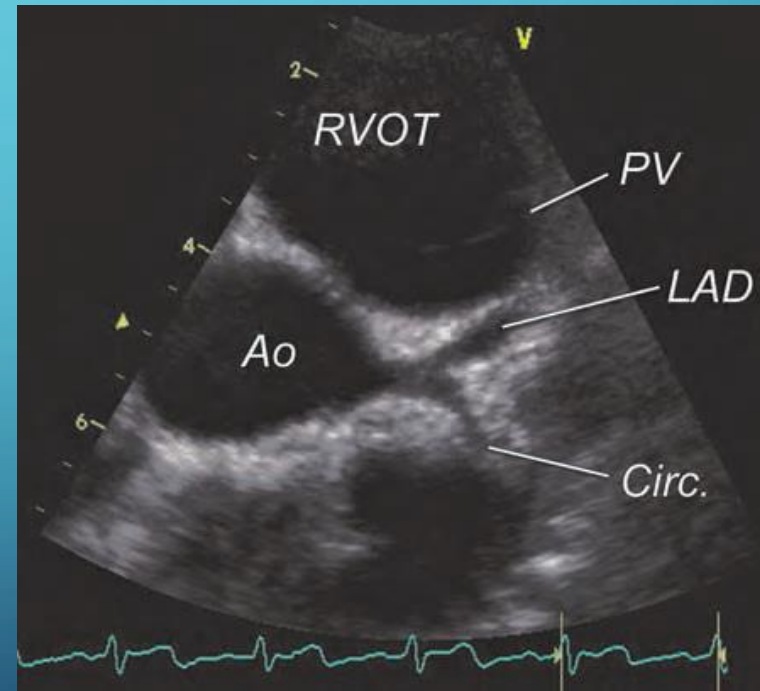


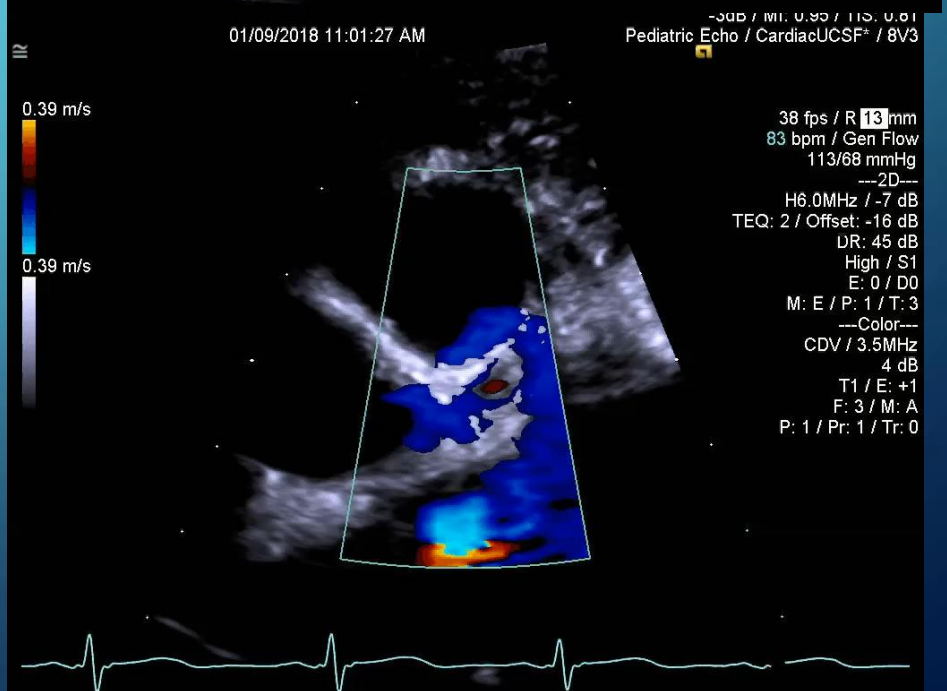
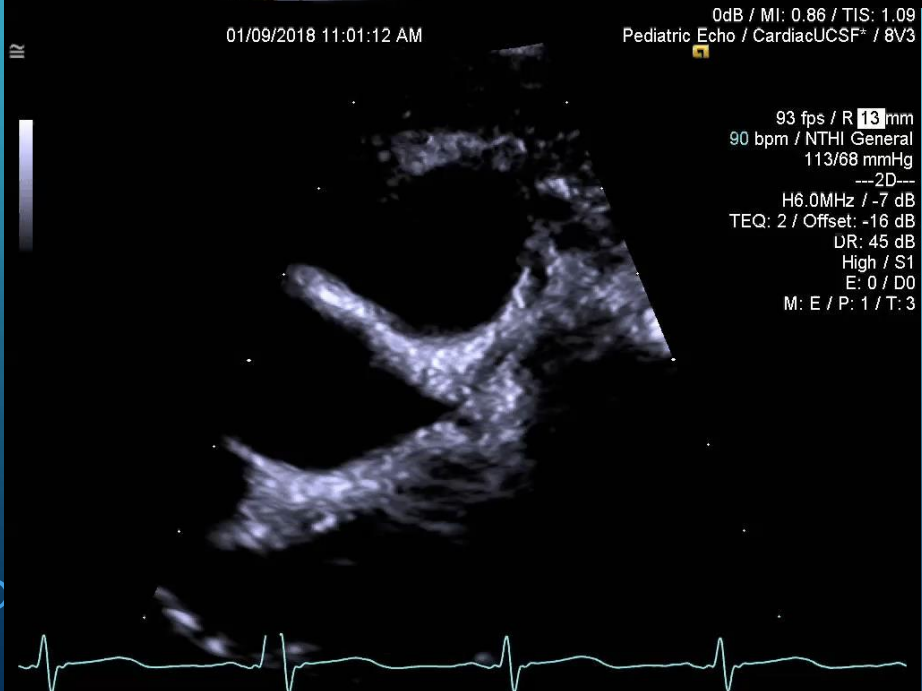
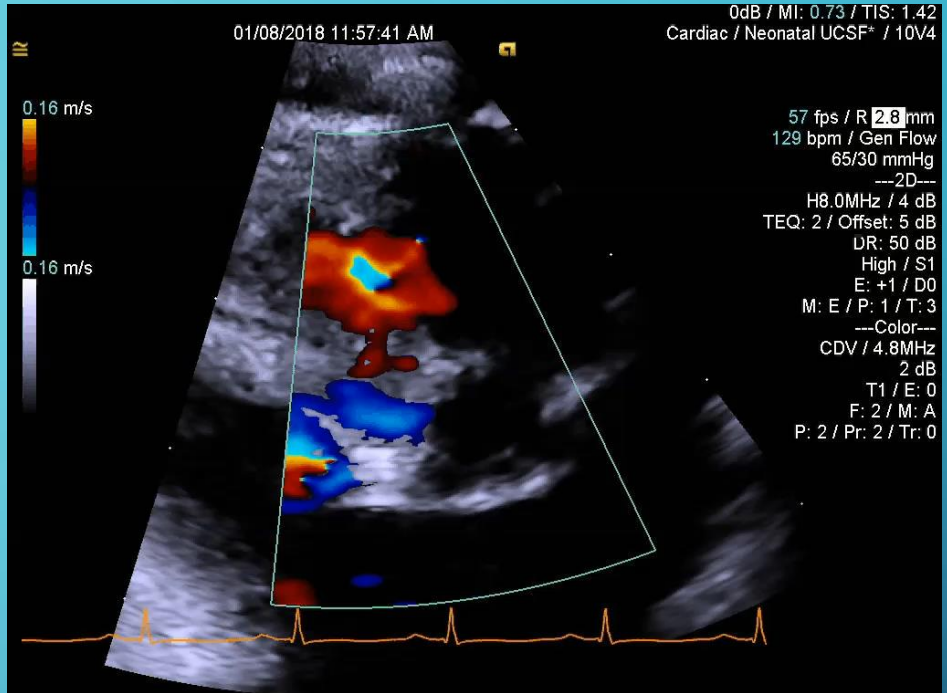
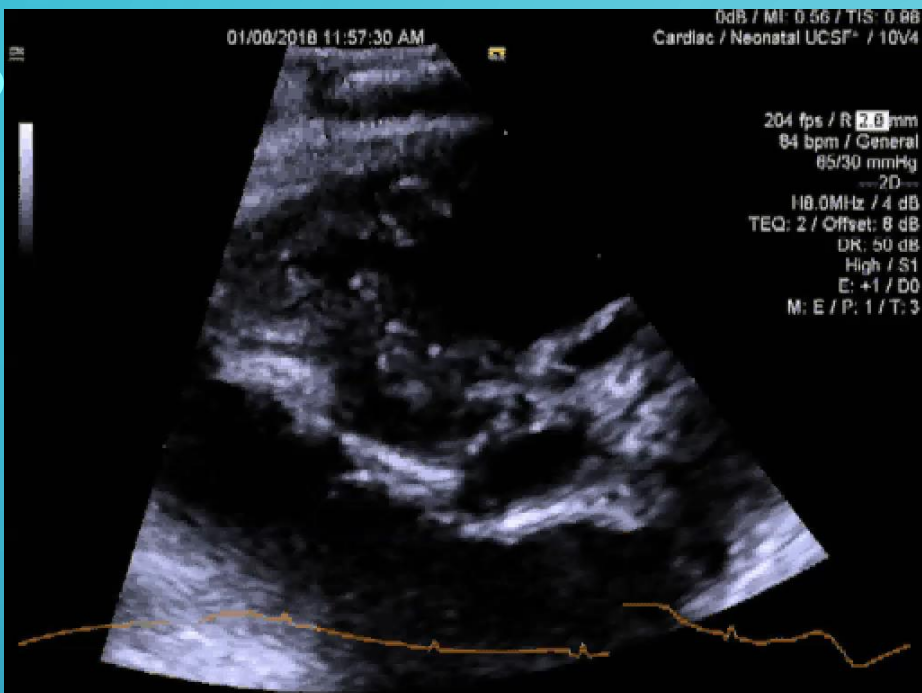
CORONARIES

RIGHT CORONARY

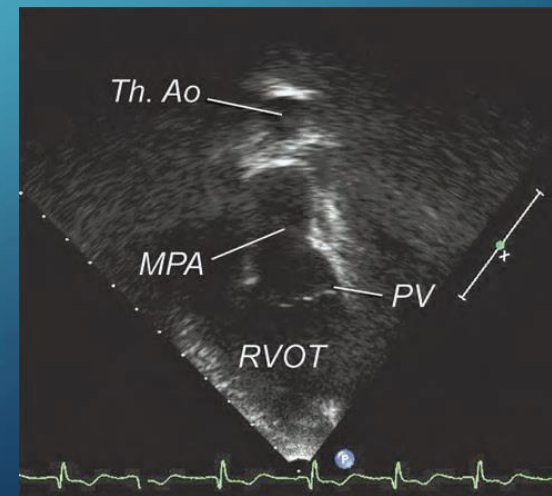
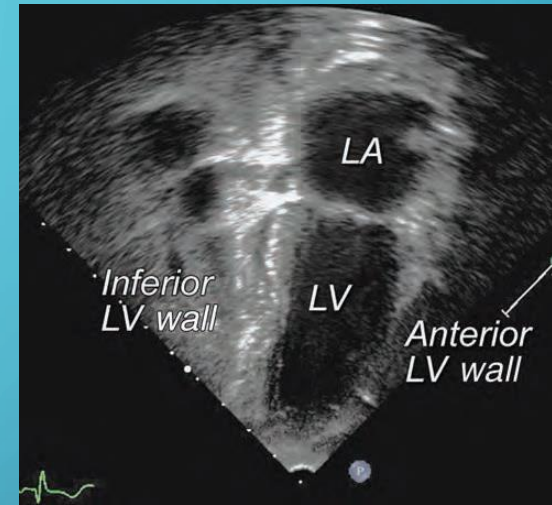
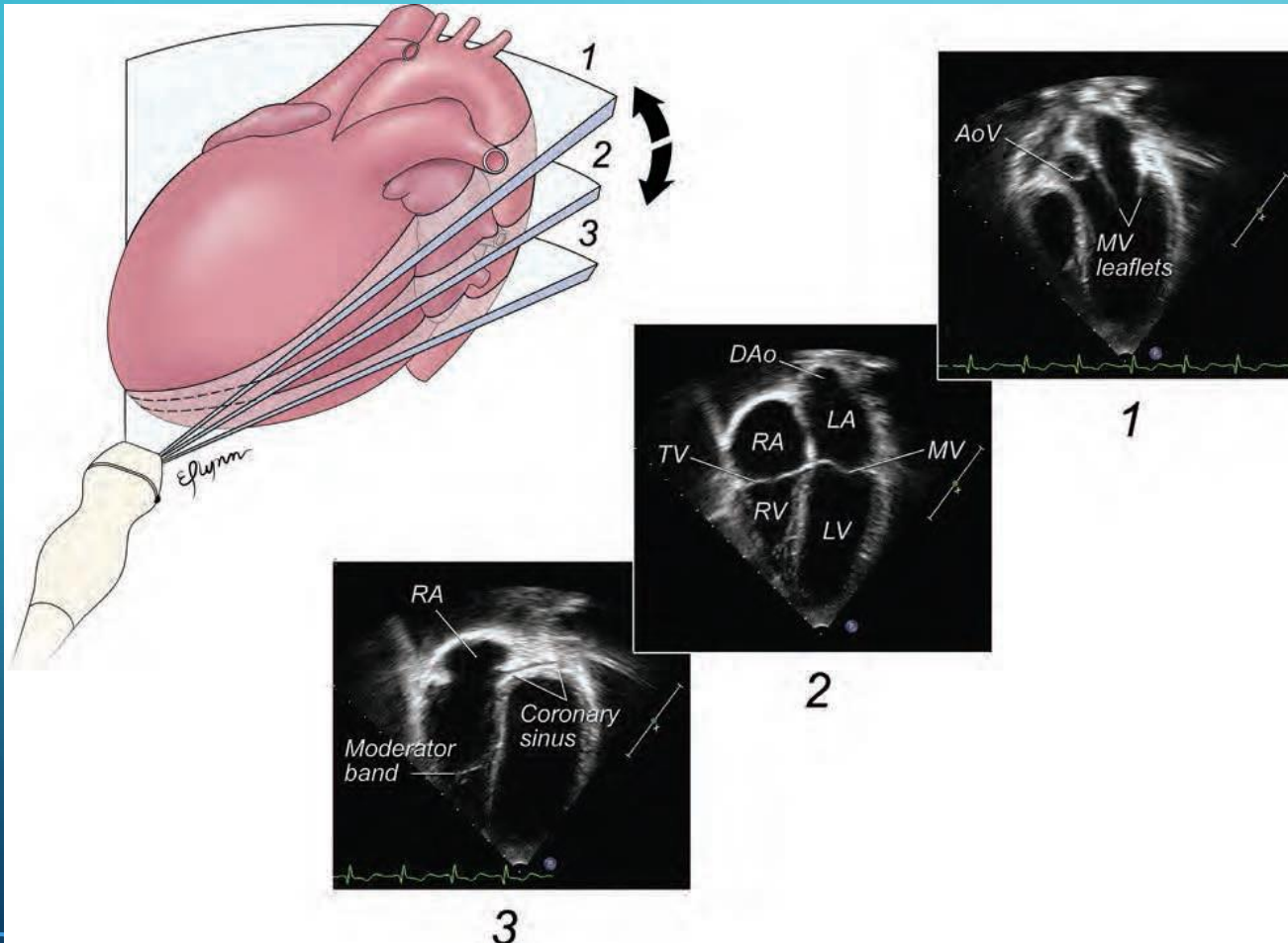


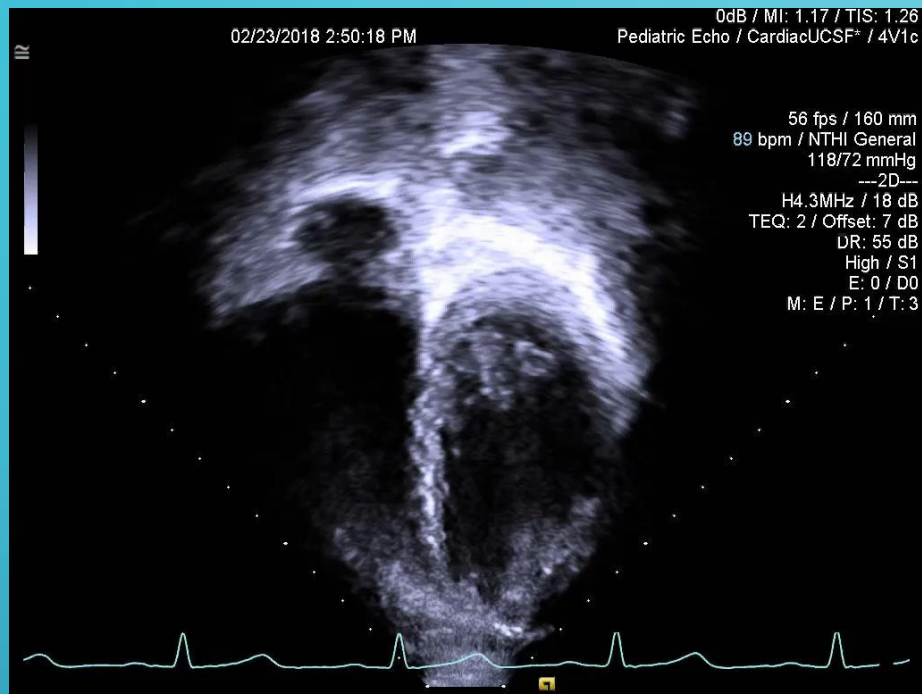
LEFT CORONARY

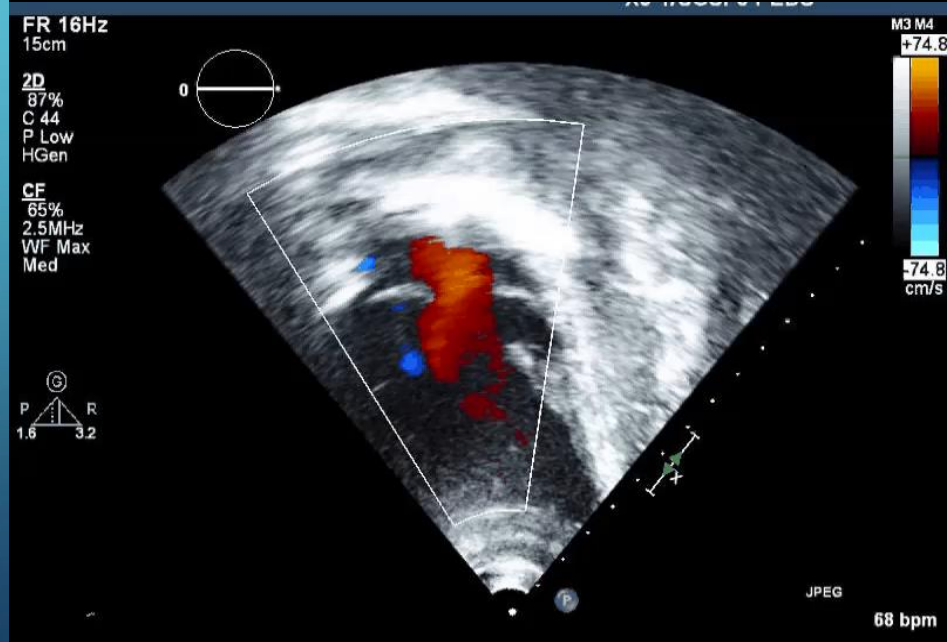
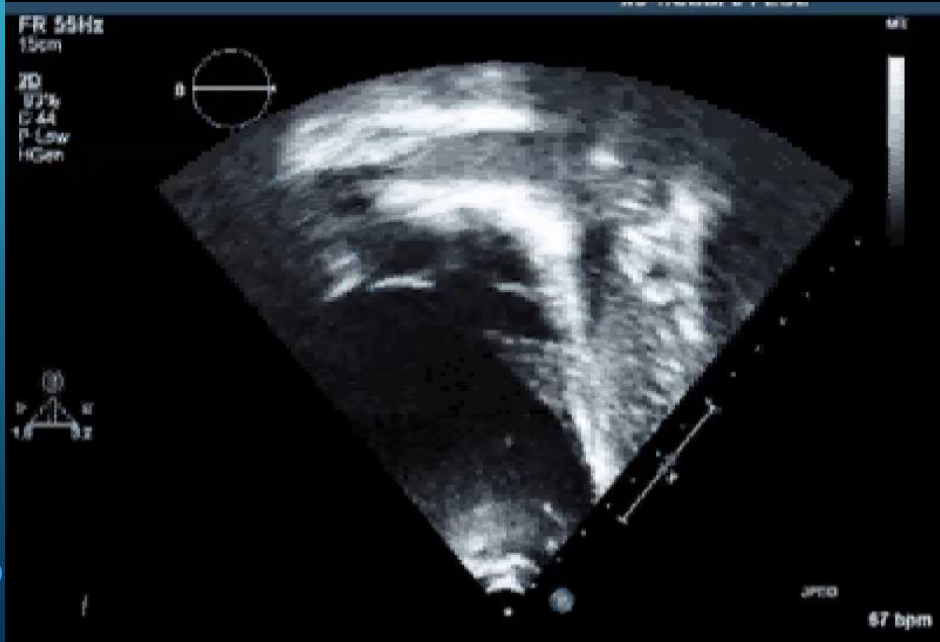
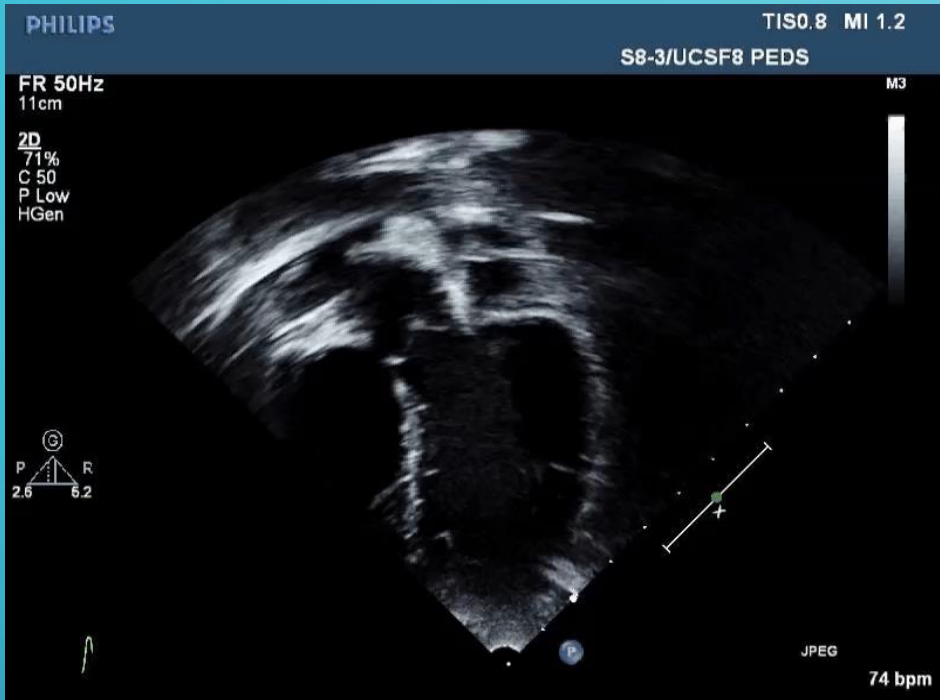


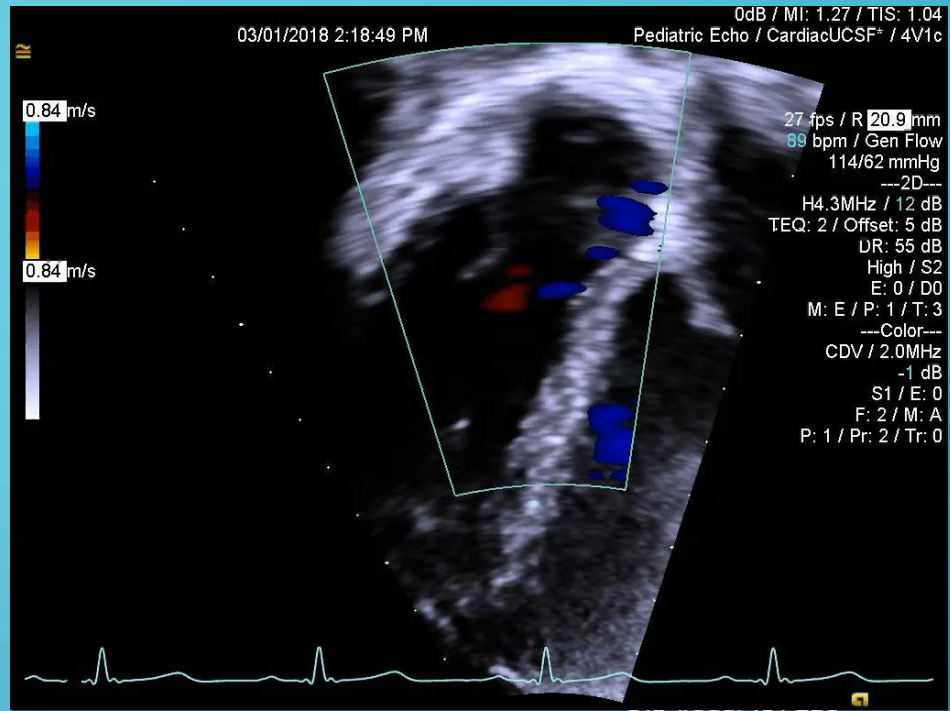


APICAL VIEWS

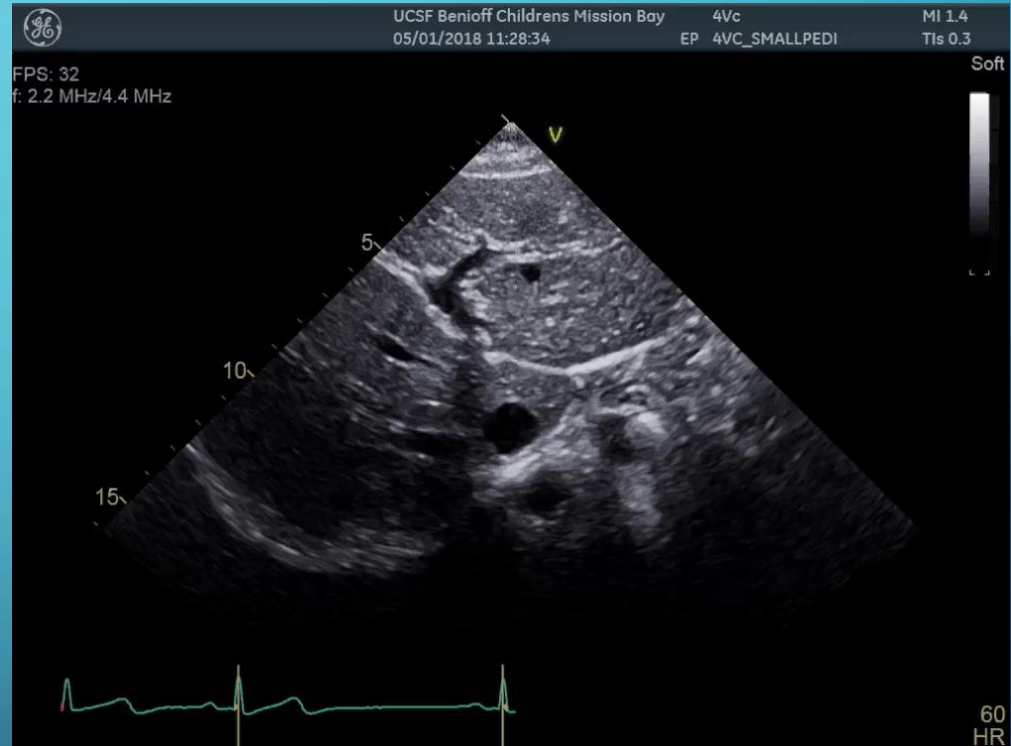
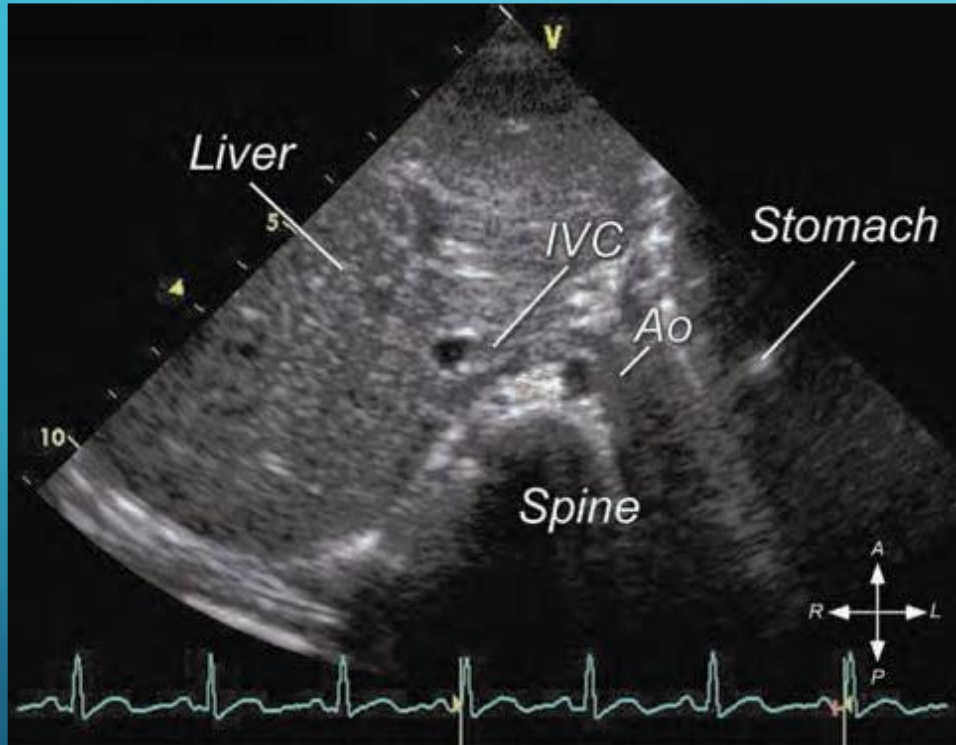




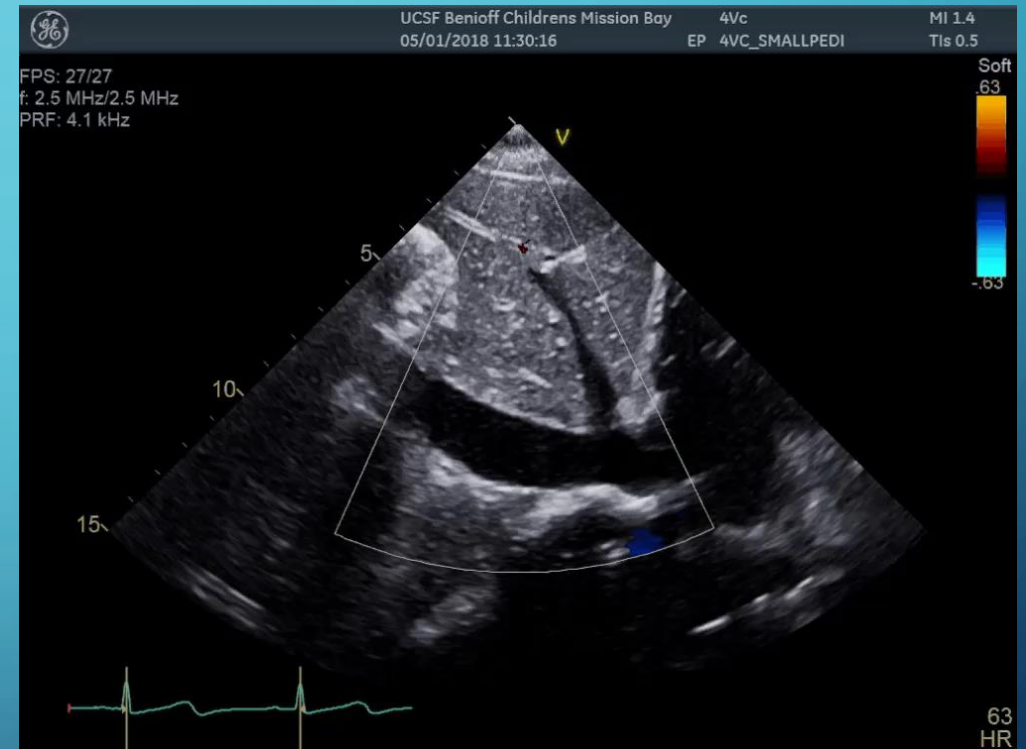




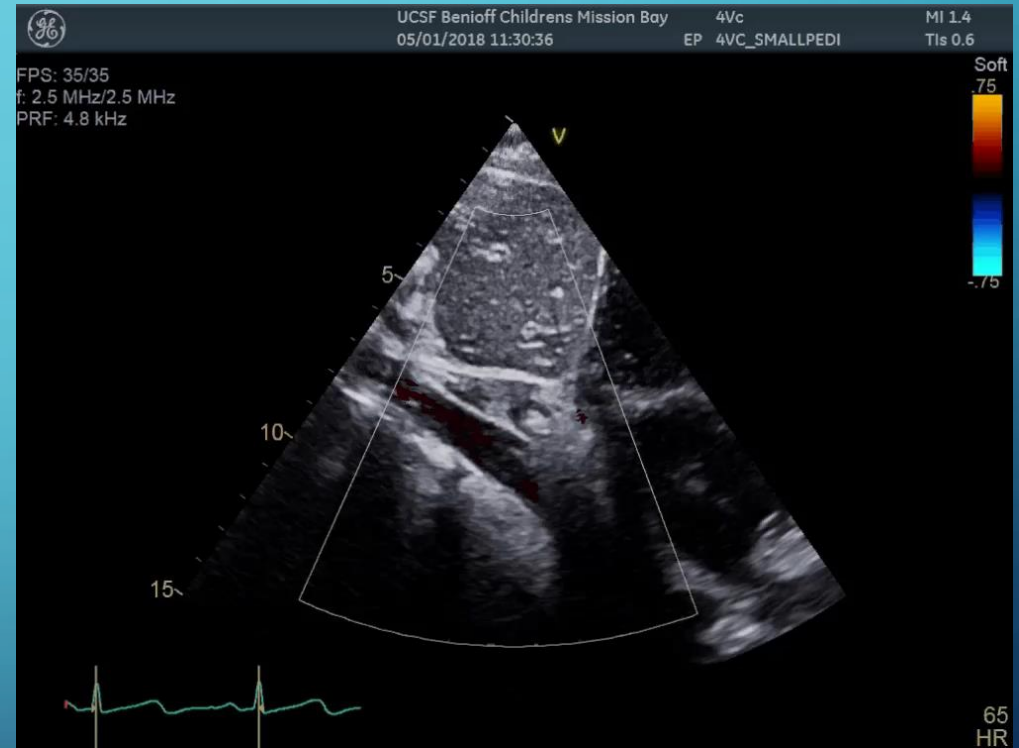
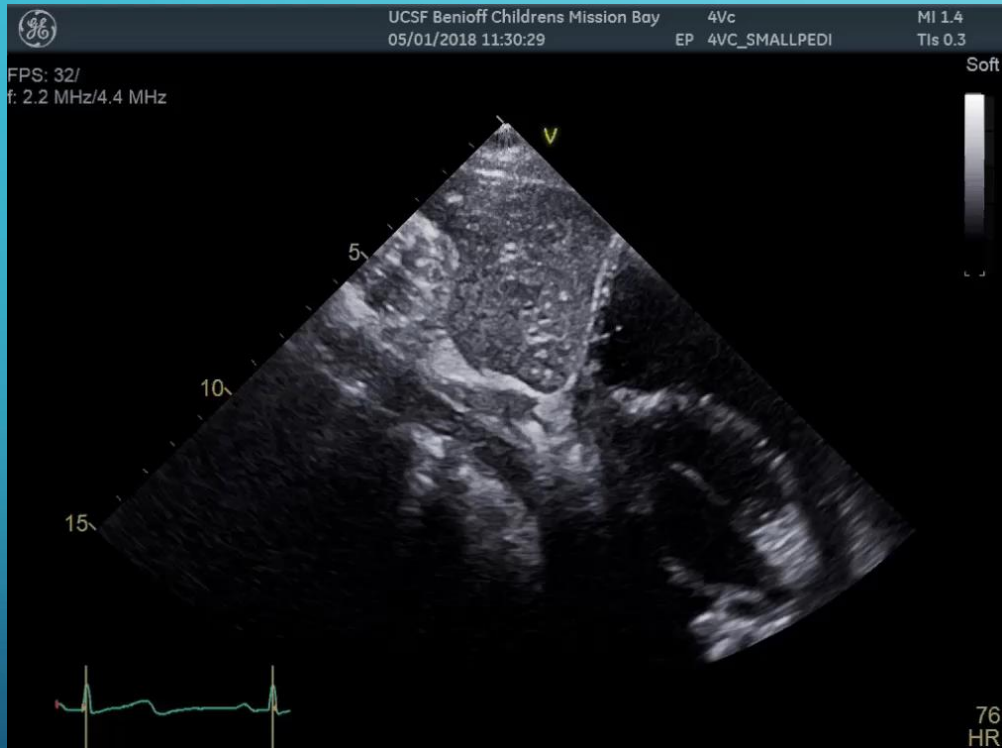
SUBCOSTAL VIEWS



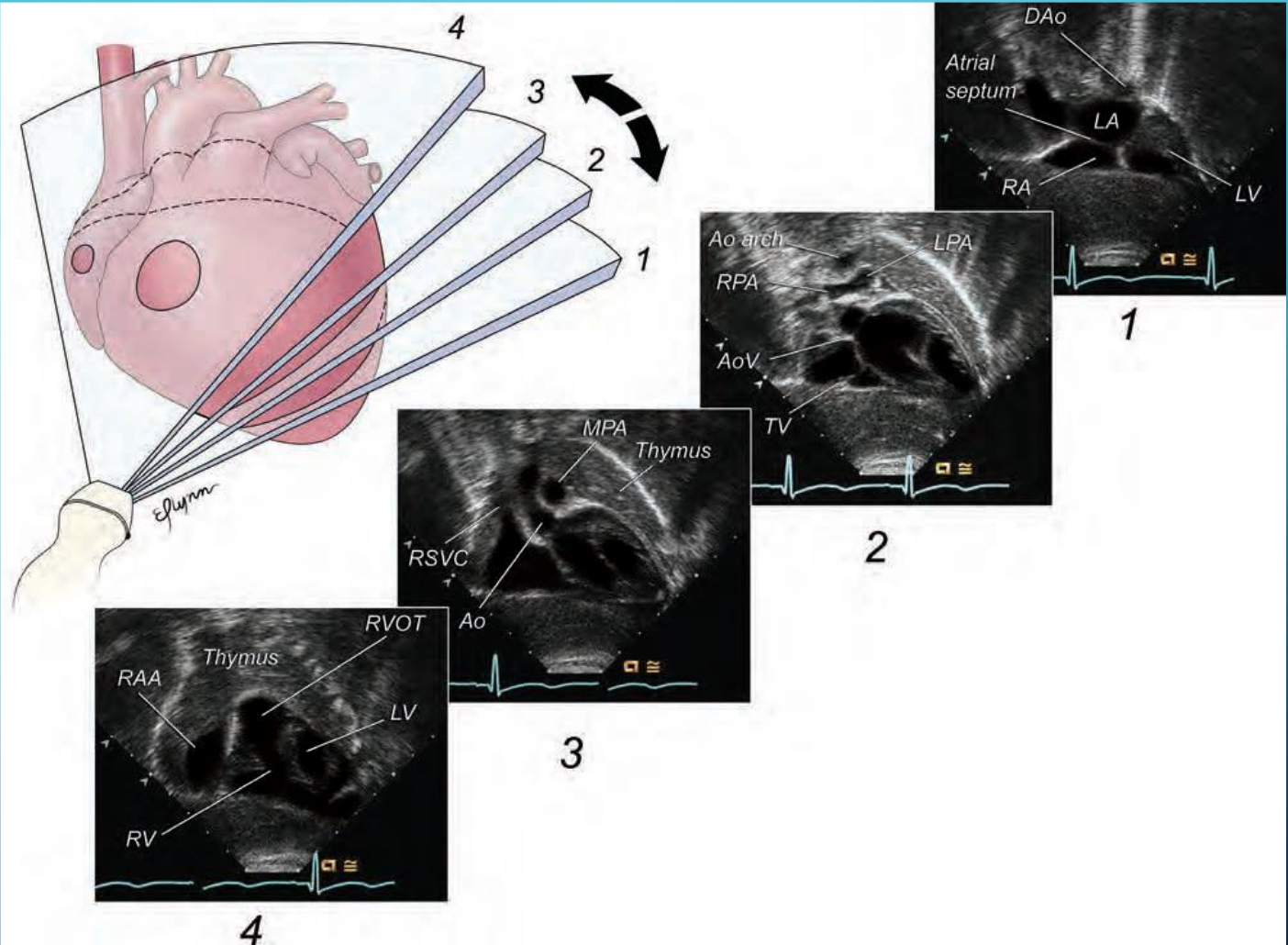
INFERIOR VENA CAVA (IVC) AND HEPATIC VEINS

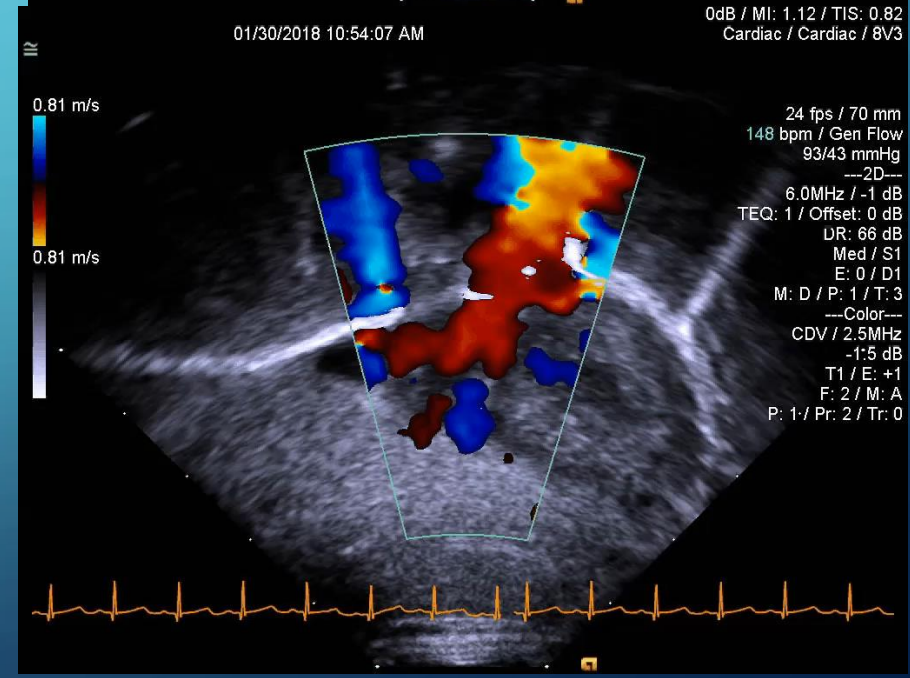
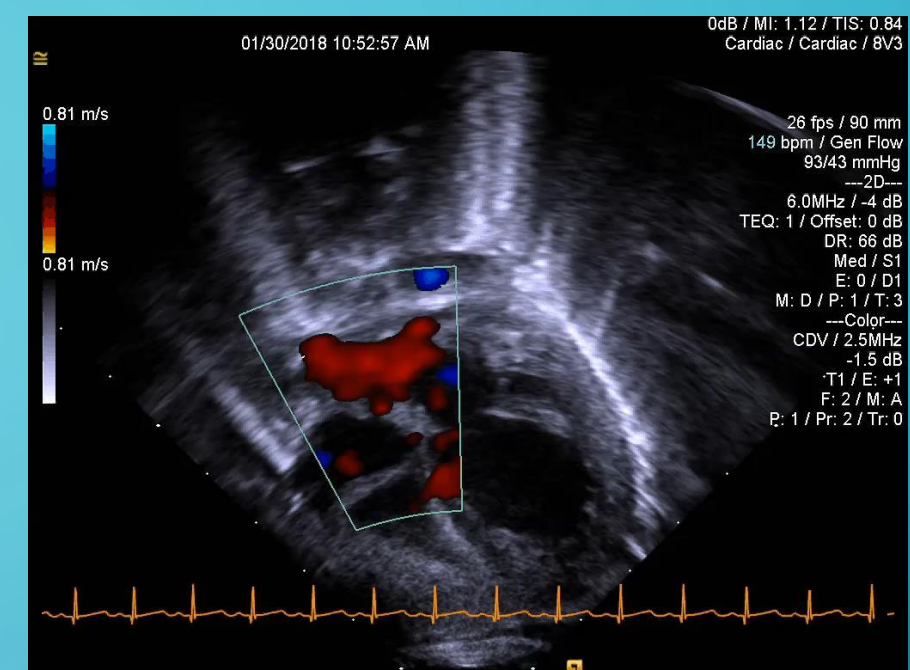
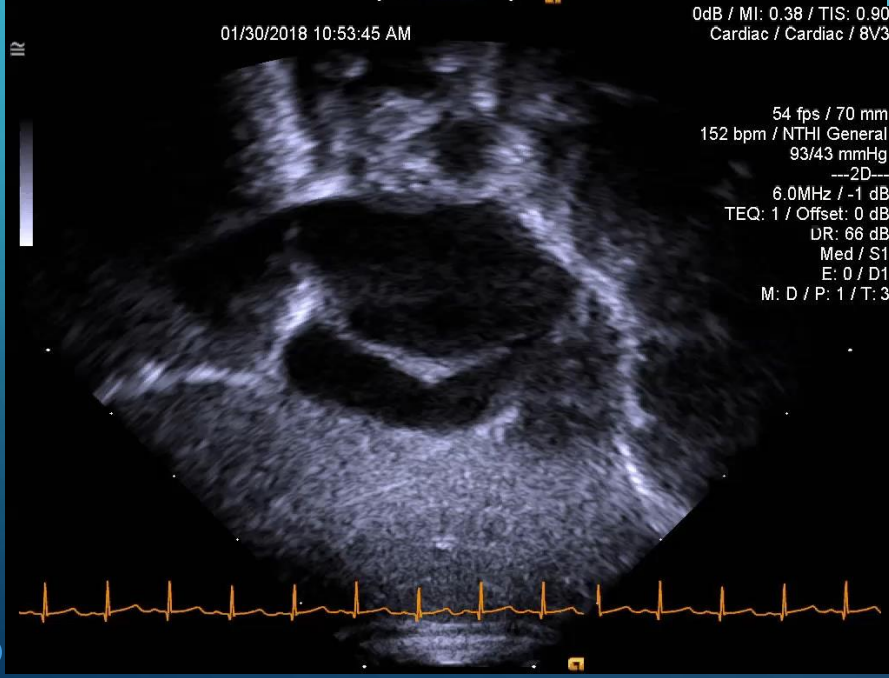
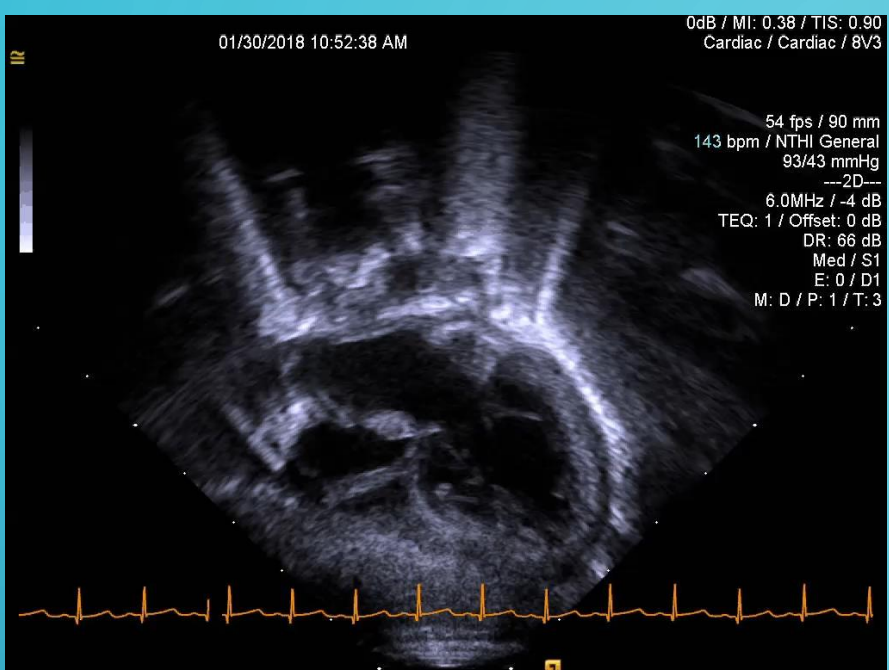


ABDOMINAL AORTA

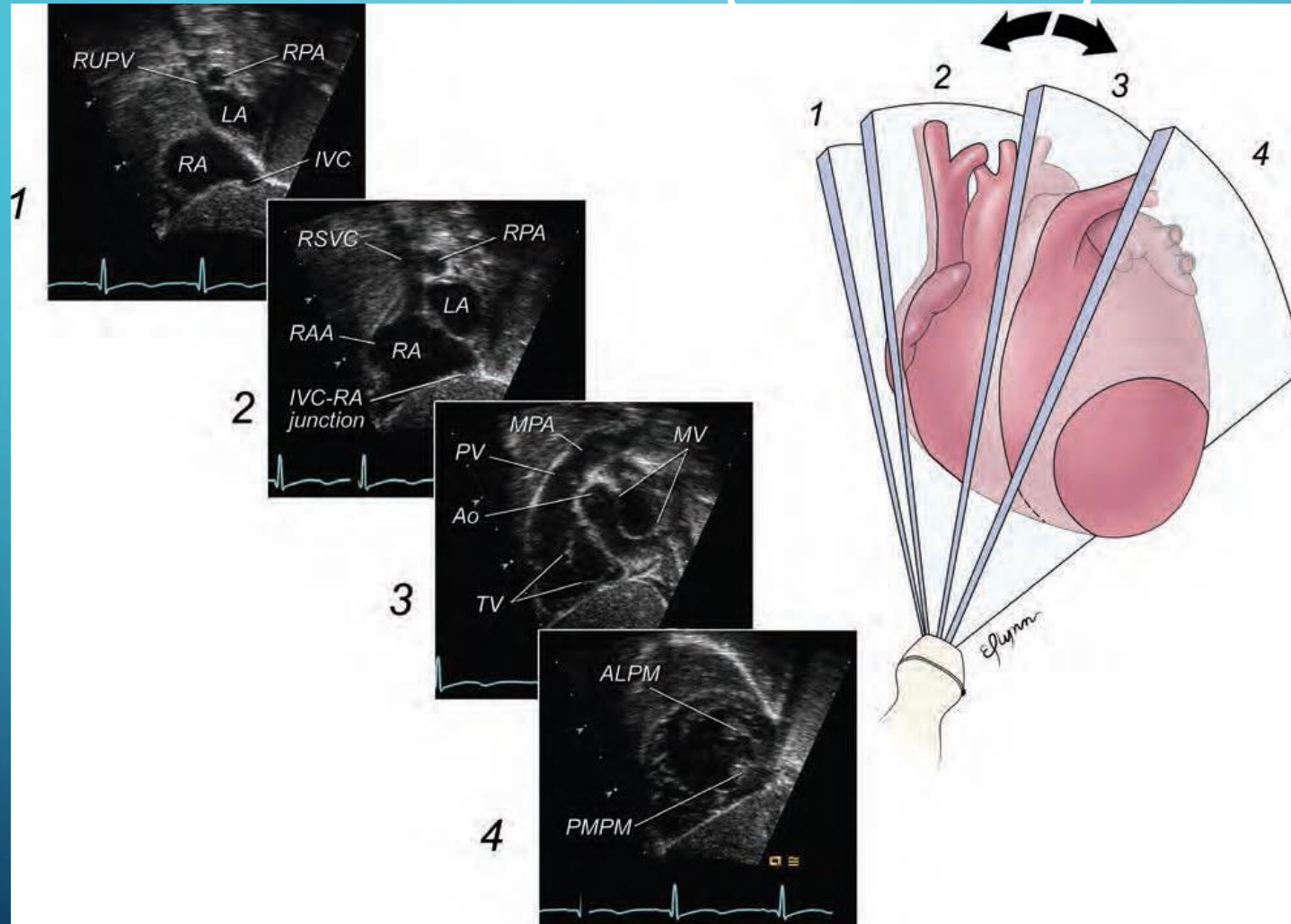


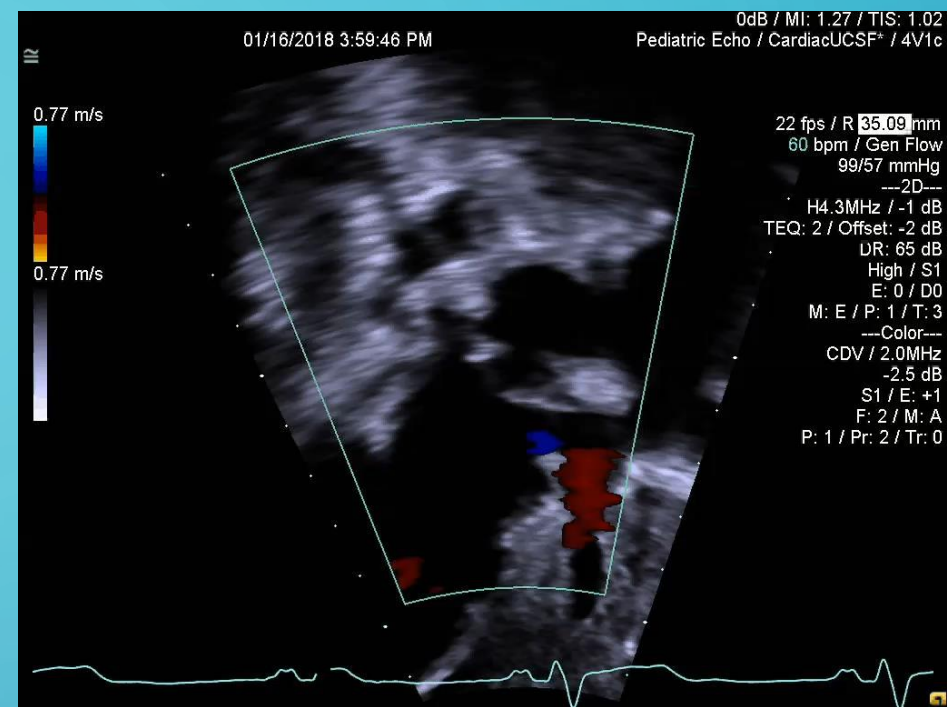
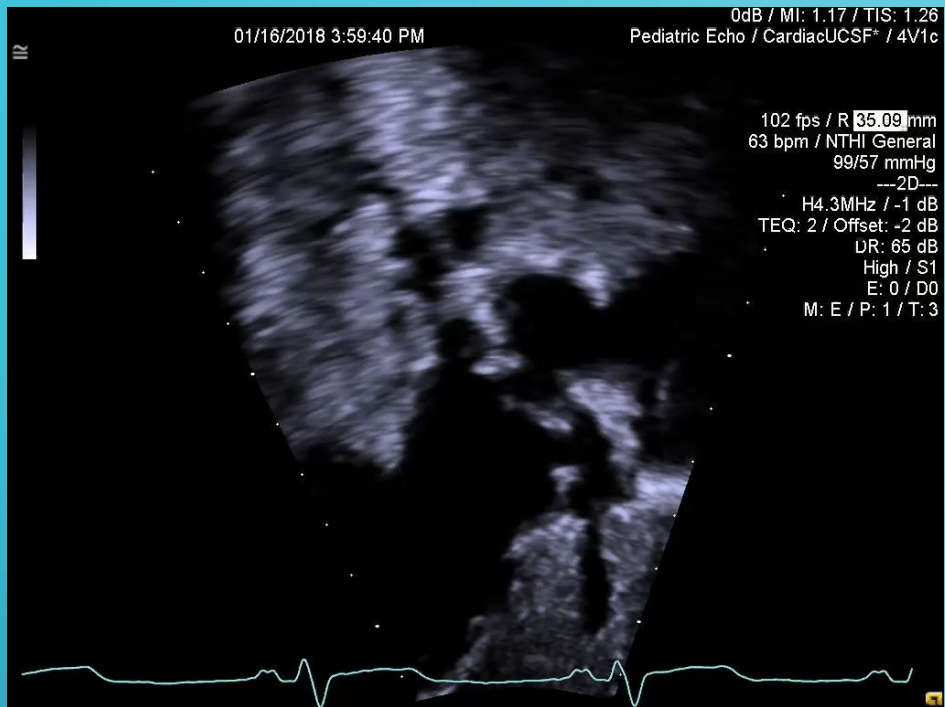
SUBCOSTAL LONG AXIS



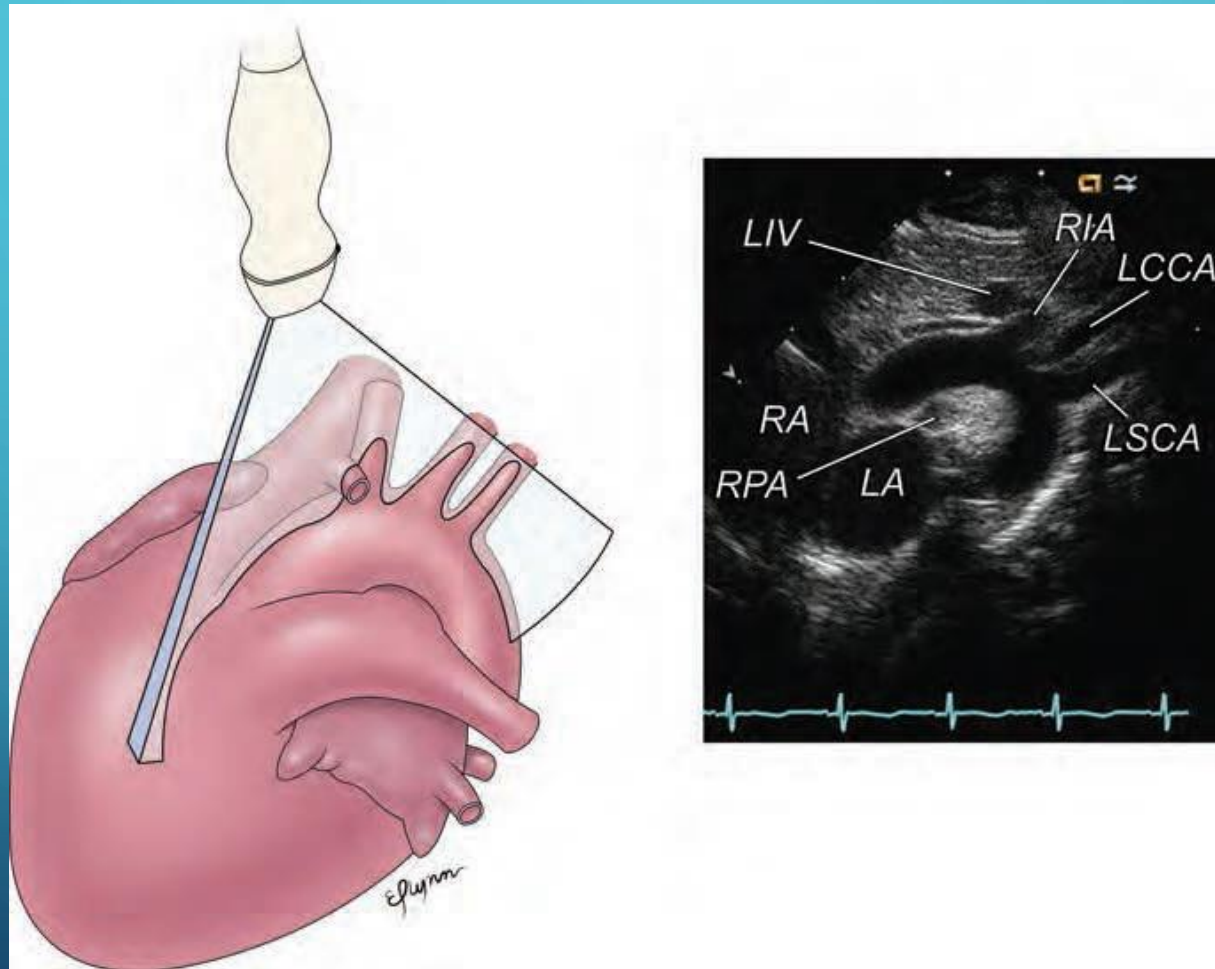


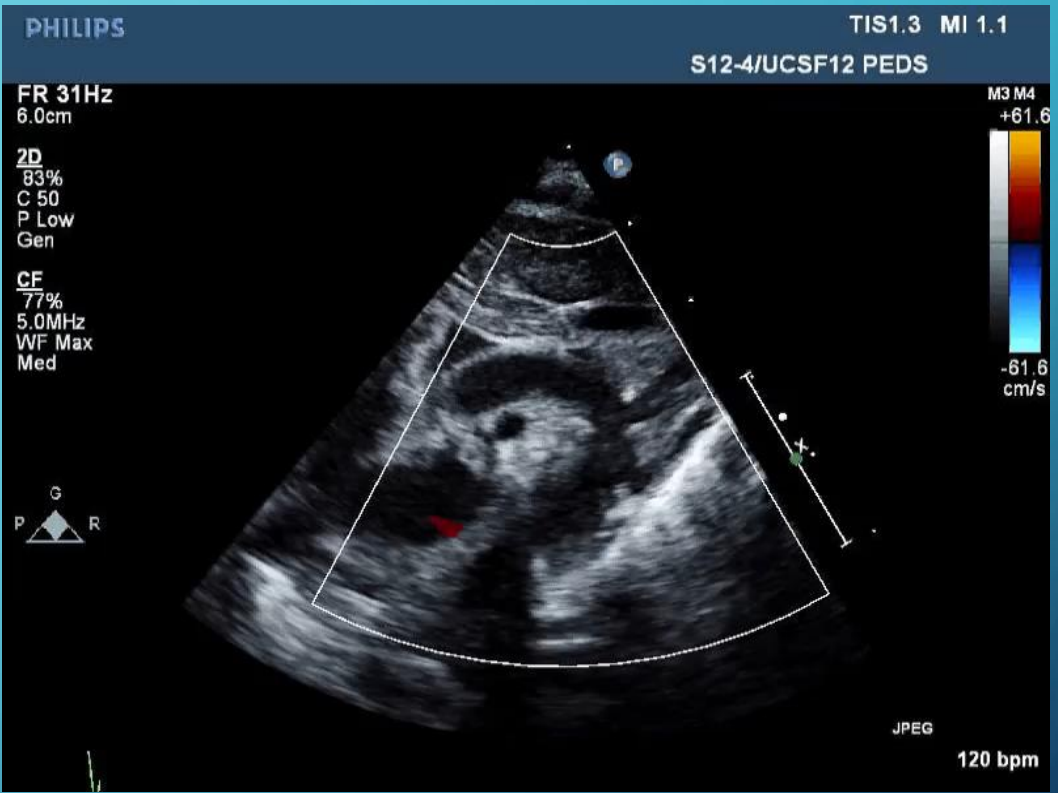
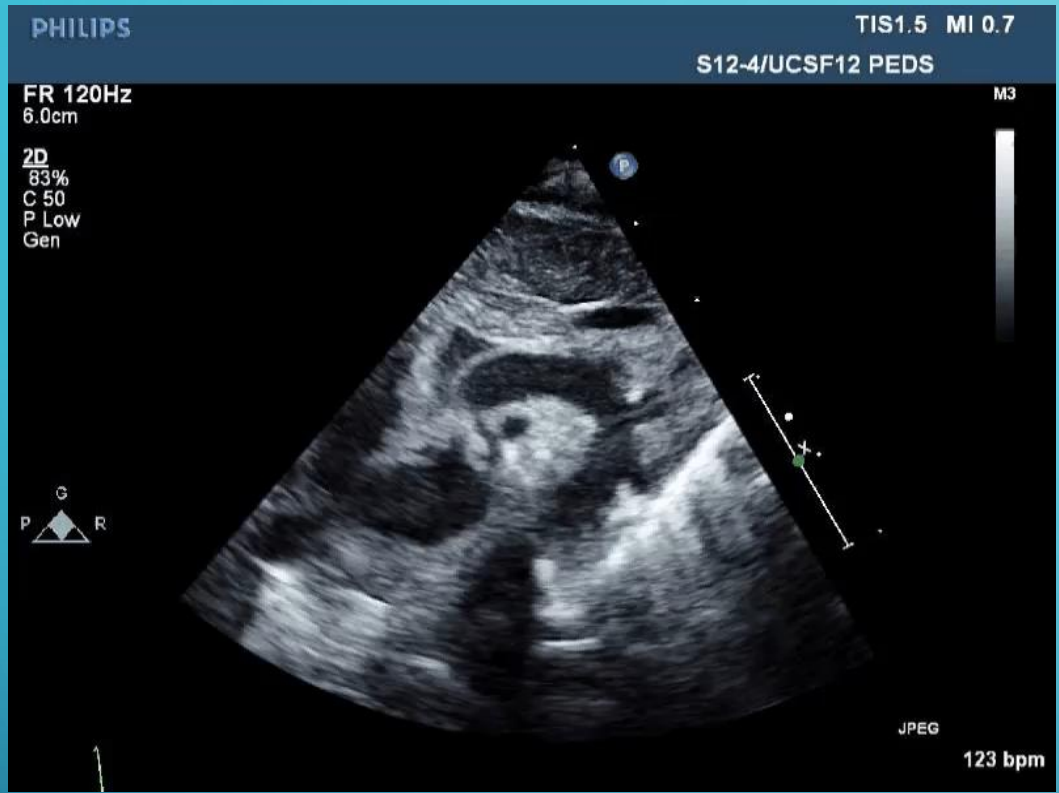
SHORT AXIS (SAGITTAL)



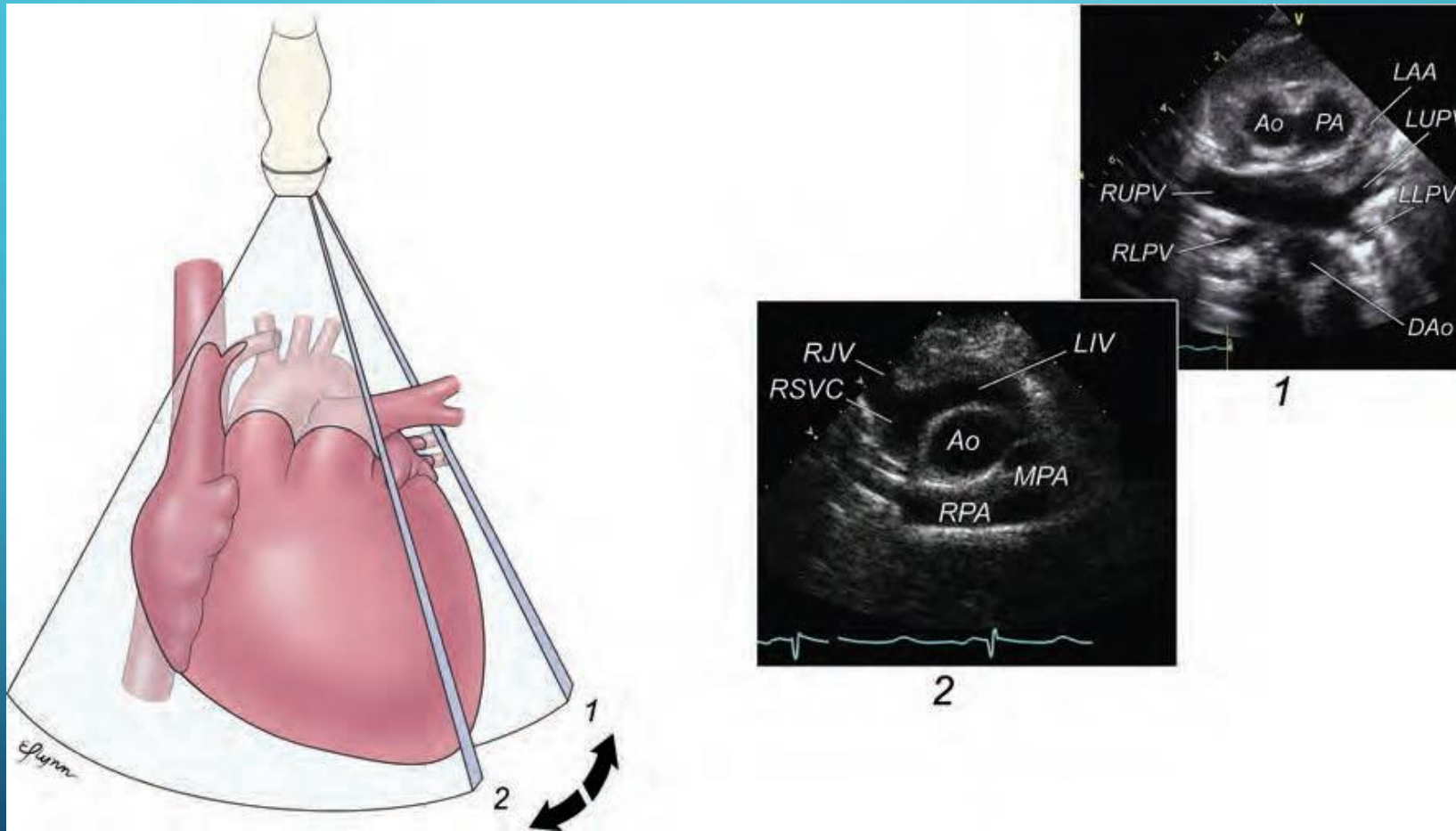


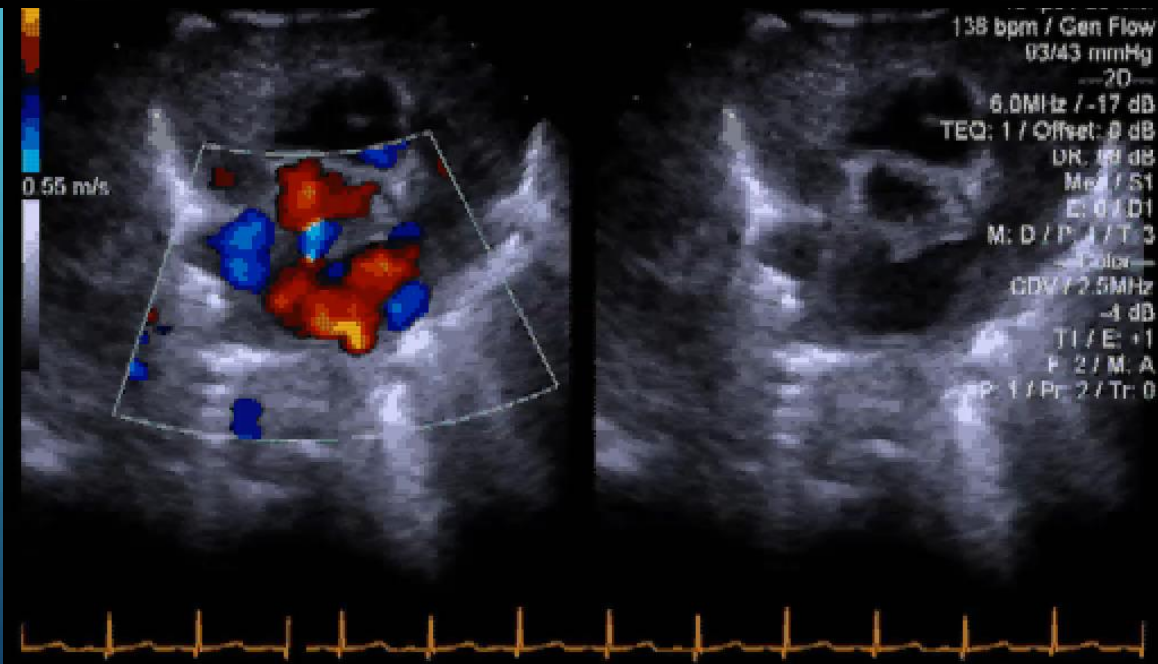
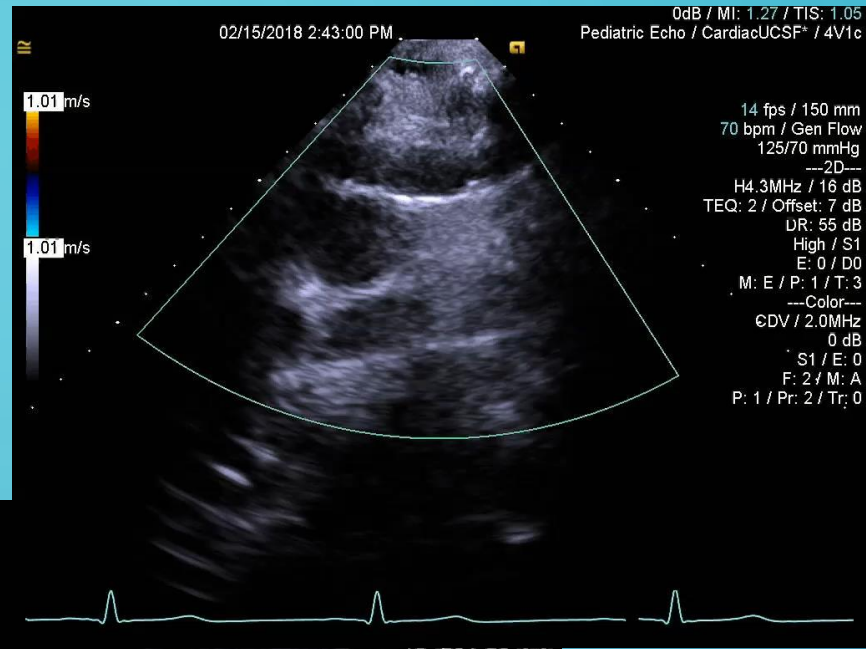
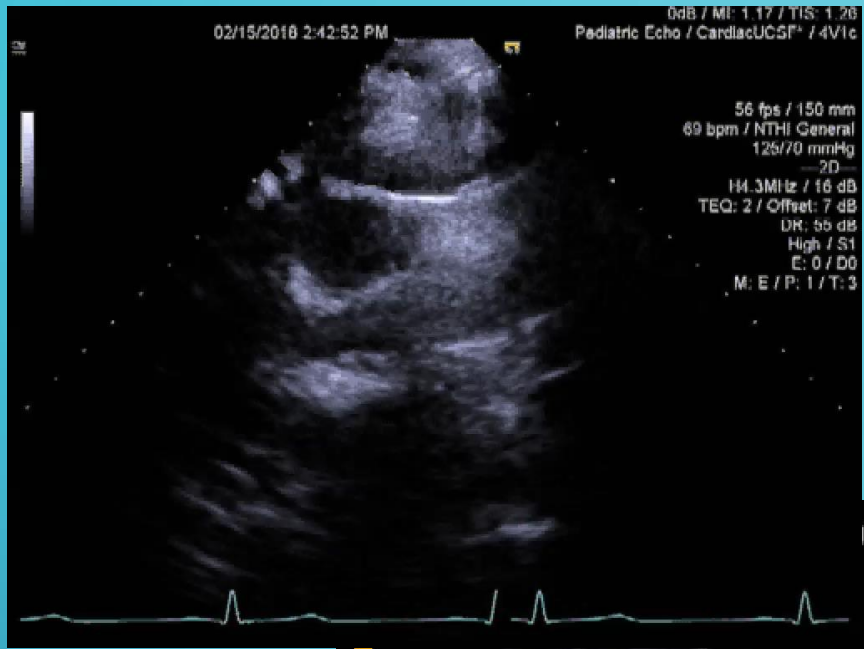
SUPRASTERNAL NOTCH





SUPRASTERNAL SHORT AND CRAB VIEW





RIGHT PARASTERNAL

